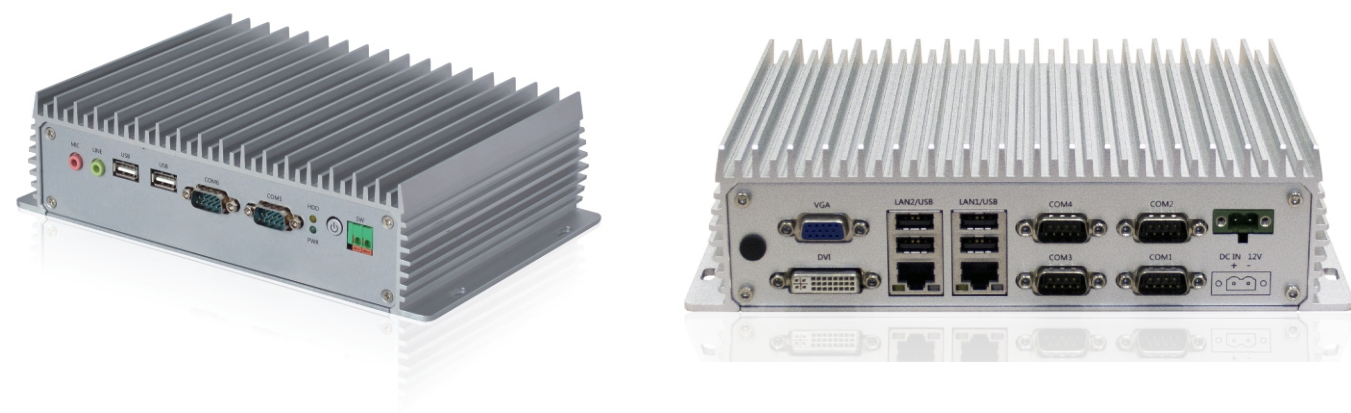


# eBOX-3220

High-performance low-power Intel Atom fanless industrial computer

shop.kacer.com



## Introduction

eBOX-3220 is a cost-effective Fanless Computer. It uses third-generation processor Intel Atom D2550 that with excellent computing performance and low power consumption. Data storage and support for mSATA SSD or 2.5-inch hard disk. Design a rich communication interface, such as 2 gigabit Ethernet ports, 6USB2.0, 6 RS232, and so on. Power input is DC 12V, with overcurrent, overvoltage and reverse polarity protection.

Fully sealed box structure to prevent dust from entering the chassis, large aluminum fin heat sink inside the system effectively distribute heat quickly, ensure that the host's reliability and longer service life. eBOX-3220 is suitable for harsh environments and long-running industrial site, widely used in finance equipment terminals, kiosk, subway fare collection, metal gates, car terminals, intelligent transportation, machine vision, medical equipment and factory automation.

eBOX-3220 is compatible with WindowsXP, WindowsXP Embedded, Windows7, Linux and major operating systems and embedded operating system, compatible with the customer based on the above operating systems and application software programs.

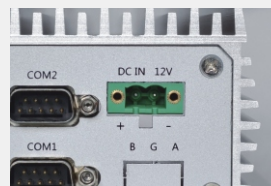
## Features and Benefits



No cable design



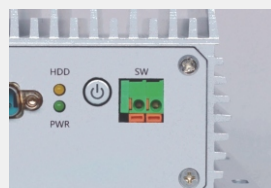
Fastening Type storage installation design



Serial and power interface uses the phoenix terminal tightening



DVI and VGA support asynchronous or synchronous dual display



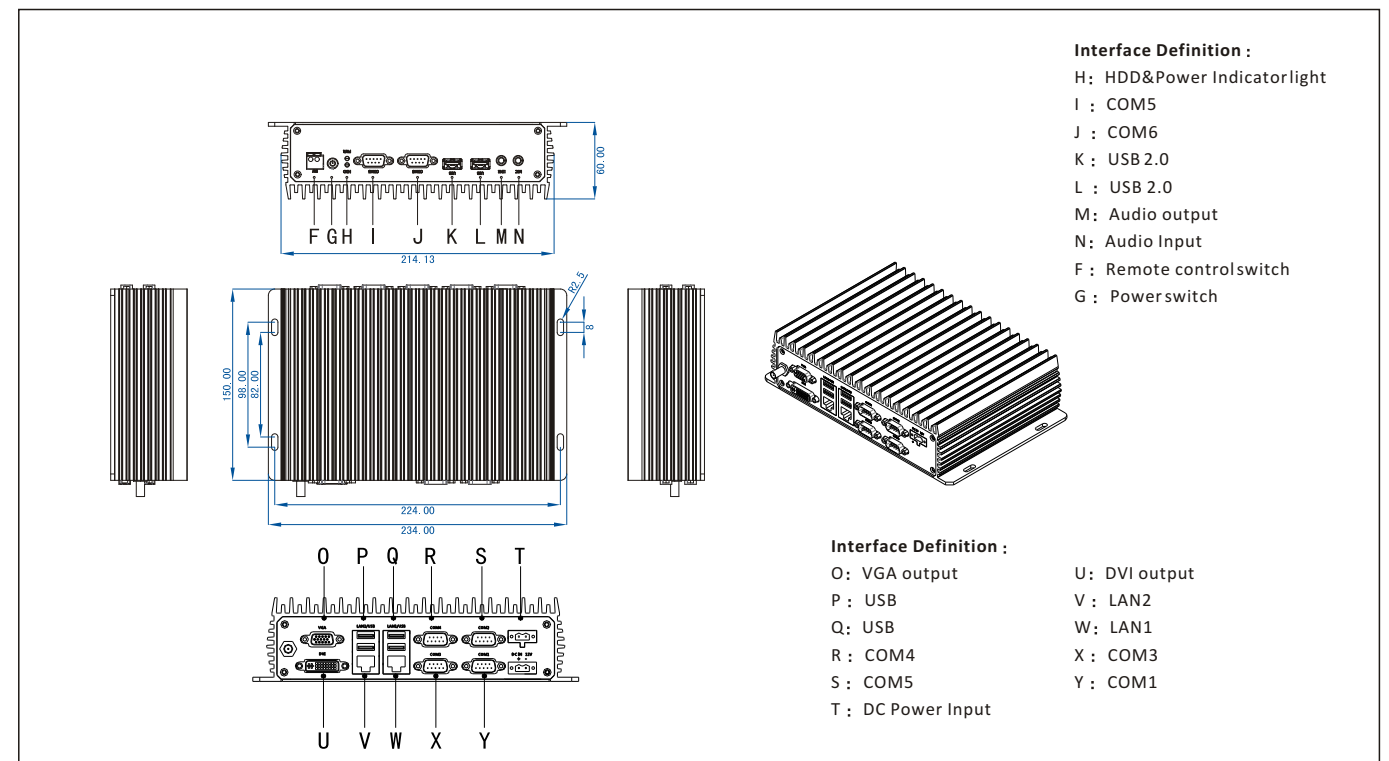
Support remote control switch

Fanless BoxPC

## Specifications

shop.kacer.com

System		Institutional	
Processor	: Onboard Intel Atom D2550 dual-core processor (TDP10W) 1.86GHZ, Secondary cache 1M	Box structure	: Aluminum box, good shock resistance and impact resistance
Chipset	: Intel NM10 (TDP2.1W)	Box surface	: Hard anodic oxidation treatment sandblasting, anti-scratch
Memory	: Standard DDR3 2GB Memory (up to 4G memory)	Mounting	: Supports desktop and wall-mounted
Disk	: Support SATA 2.5" SSD, HDD, mSATA	Indication	: Power Switch/ Power LED/ HDD LED
Display	: Intel GMA3600 integrated graphics chip, support f DVI&VGA	Cooling System	: Finned aluminum heatsink
Ethernet port	: 2 Realtek RTL8111E Gigabit Ethernet ports	Power Input	: DC 12V input, with over-current, over-voltage protection
Wireless	: A Mini-PCIe slots, scalable 3G, Wifi wireless card	Dimensions	: 234 × 150 × 60mm
Audio	: Realtek ALC662 audio controller	Color	: Silver
USB	: 6 USB2.0 ports, with electrostatic protection 8KV	Weight	: 1.2kg
Serial port	: 6 RS232	Environmental	
GPIO	: 4 in & 4 out (Customizable)	Working tem.	: -20 ~ 60°C (No mechanical hard drive)
Extend	: Support PC104PLUS (Customizable)	Storage tem.	: -40 ~ 80°C
Watchdog	: Programmable from 1 to 255 seconds	Relative humidity	: 95% (No condensation)
I/O	: VGA/DVI/2GLAN/6USB/6COM/AUDIO	Vibration	: 50 ~ 500Hz, 1.5G, 0.19mm Peak to peak
		Shock	: 10G/peak (11ms secretary)



## Ordering Information

eBOX-3220: D2550/2GRAM/2LAN/6 USB/6 COM/VGA/DVI